

# Owner's Manual

Original Manual - keep in a safe place for future reference



## WARNING

Important-Keep these instructions for future reference

You should not use the Child Carrier if you have not read and understood the contents of this Owner's Manual. Failure to heed this warning may result in serious or fatal injury.

Biking and bicycle touring are increasingly popular recreation activities. Your new trailer is designed and constructed to provide a portable, comfortable and sturdy addition to your outdoor ventures. Please read the instruction manual and all safety warnings carefully before using your trailer. Passengers and riders should always wear properly fitted, approved cycling helmets

### **Key features of the TrailerQuick**

assembly, take-down and storage, forward-facing two passenger seating, five-point seating harness with quick lock and release. Snug full cover top with roll-up window, push-button quick release removable wheels.



#### **Warning**

Not for use with infants under 12 months of age, if no baby foam chair exists. (Condition that the child can sit independently) (According to body height) Children must be able to hold up head with helmet on. Children must always use seat belt and bike helmets, never leave children unattended. Always ride defensively and do not exceed (45 kgs) maximum load. Do not exceed 10 MPH(16 Km/H) maximum speed. Always instruct children not to rock, bounce, or lean. Ventilate during hot weather.

#### **Pre-ride safety check**

Check to ensure hitch clamp is tight, check to ensure hitch safety strap is secure. Buckle up! Check seat harness and secure all baggage. Inspect bike and trailer condition before each use. Helmets on!, ensure rider and child helmets are on and secure. Check tire air pressure. Always maintain between 40 PSI and 65 PSI(2.80 BAR and 4.50 BAR).

#### **Riding Tips**

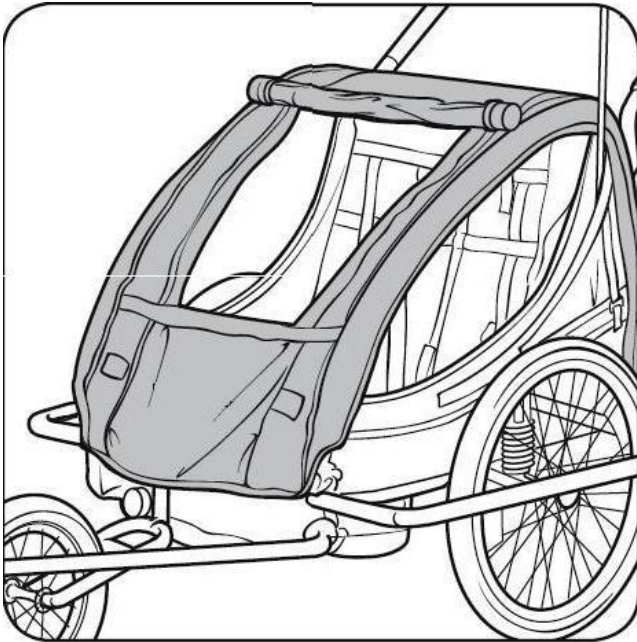
Ride slower than you would if you were without the trailer. You will require extra stopping distance. Use your brakes early and take corners very gradually. Use on smooth roads only, do not ride over curbs, potholes or off road. Always use the flag supplied with the trailer to allow others to see you, avoid riding at night.

#### **Safety recommendations for passengers**

The safety of your child is of great concern. The trailer seat is intended for passengers older than 18 months and able to wear an approved helmet. Your children must be able to hold their heads upright. Check with your pediatrician to make sure your child's development makes him or her a suitable passenger in this trailer. Make sure that your child is seated securely and the harness is properly engaged. The child's sitting height should be below the crossbar, and the correct shoulder strap height must be used. Refer to the assembly instruction and diagram. Make sure your child cannot touch the moving wheels or the roadway.

## ATTACHING THE ALL-SEASON TOP COVER

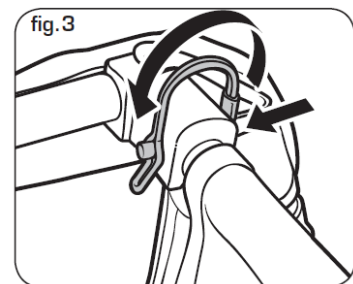
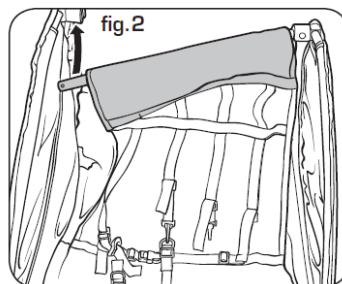
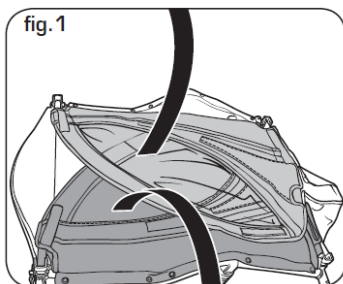
Position cover over the top of the trailer so that the roll-up window with bug mesh screen is positioned over the front of the trailer. Wrap the snap on straps on the crossbar to fix the all season top cover on the frames. Fasten the Velcro around the trailer's corners. The all-season top cover is designed to keep passengers and cargo dry and warm in inclement weather and protects from flying debris. The rain PVC cover can be rolled up to allow for added ventilation in hot weather. Velcro closures keep the rain cover out of the way when rolled up.



Passengers can become hot inside fully closed trailer during very hot weather or when parked. Please make sure to open roll up to cover vents to prevent overheating. Important: Store trailer out of direct sunlight to prevent color fading and eventual weakening of the fabric components. Caution: To protect children from flying objects, never use trailer without the front window or bug screen in place.

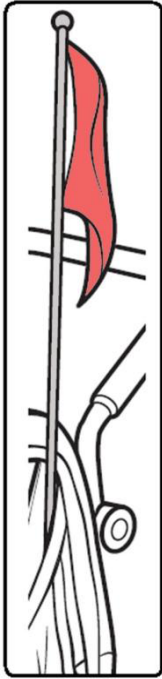
## ASSEMBLING THE FRAME AND SEAT

Remove packing and hardware bags from box and sort all the contents. Unfold side panels of trailer to the upright position, see figure 1. Four grenade pins lock the sides into the upright position. Insert these pins and lock the springs as shown in figure 3. Lift the rear cargo panel and attach. There is one crossbar that supports the side panels and rear of the seat. As you swing this crossbar upward into position across the top between the side panels, route it through the loops at the top of the seat, see figure 2. Insert the crossbar into the upper sleeve. Insert grenade pin and lock the spring clip, see figure 3.



## ATTACHING FLAG

Insert the flagpole into the flagpole pocket at the left rear corner of the side panel. Make sure to always use the safety flag to maximize your visibility to other vehicles sharing the road or path.



## INSTALLING REAR WHEELS

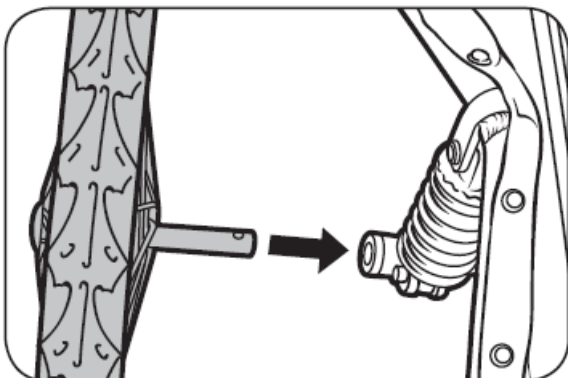
Lift the rear of the frame enough to allow you to insert the wheel axle into the hole in the side of the frame. To insert the wheel, you must completely depress the push button in the center of the wheel as you slide the wheel into the axle.

Once the wheel is completely inserted, you may release the push button. After completing this operation, tug on the wheel to make certain it is properly locked in place.



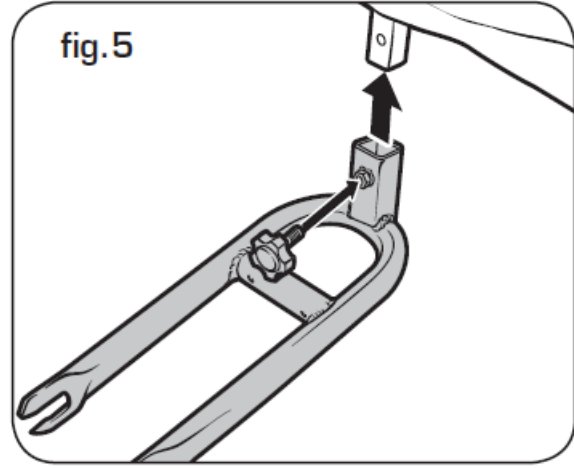
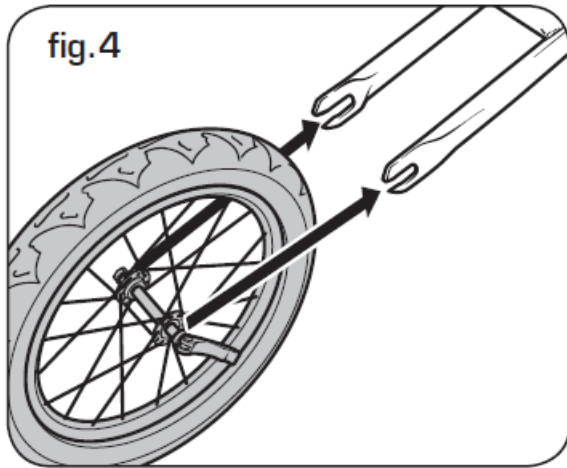
### Warning:

Failure to properly install and adjust wheels with quick release levers could allow wheel/s to come off during use. This could lead to serious injury.



## ATTACH THE FRONT WHEEL

Insert the front wheel into the quadrate tube on the frame and be sure to line up the holes in the frame with the holes in the front wheel set to allow the long screw to be installed, see figure 4. At last tighten the black knob firmly, see figure 5.

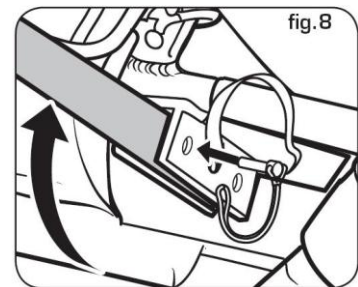
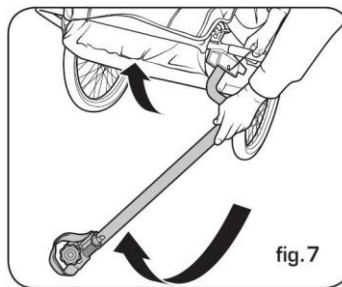
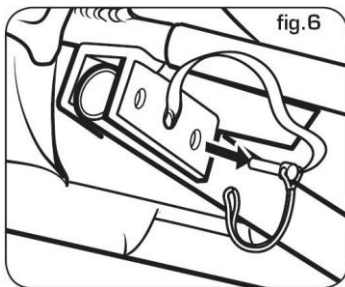


## HITCH ARM ASSEMBLY

Lift front of trailer up. Remove the hitch arm-locking pin from back hole in hitch arm bracket, see figure 6.

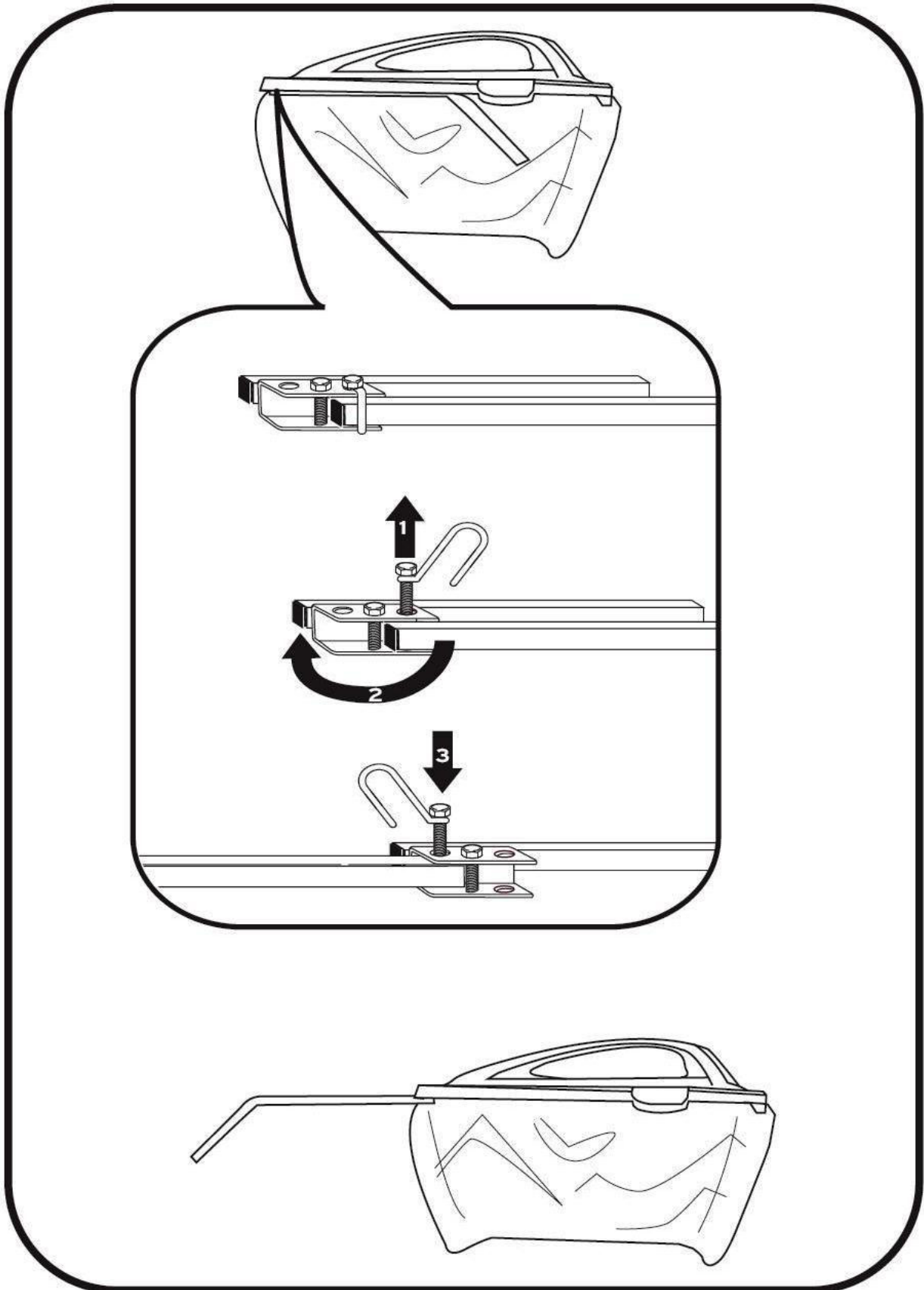
Fold hitch arm out until parallel with base frame, see figure 7. Lock the hitch arm into place by re-inserting the safety pin through the front hole of hitch arm bracket and snap the safety pin, see figure 8.

Note: Ensure the safety pin is secured with the wrap spring clip.



## ASSEMBLING THE CONNECTION OF TRAILER AND BICYCLE TO THE REAR AXLE.

Caution: If the connector interferes with your bike or other bike attachments, or if it is not fastened securely, do not use. Contact your bike dealer for help with proper installation.



Bolt the rear hole of the towing bar to the centre hole of the towing bar holder. Bring the towing bar into driving position and insert the safety pin through the front holes and fasten.

Release the front coupling part by pulling out the safety pin and fasten it to the left side of the rear wheel axle. Before riding off, connect the coupling part of the towing part to that of the bicycle and secure with the safety pin. Guide the safety strap around the rear wheel stay and fasten it to the safety grommet of the towing bar.



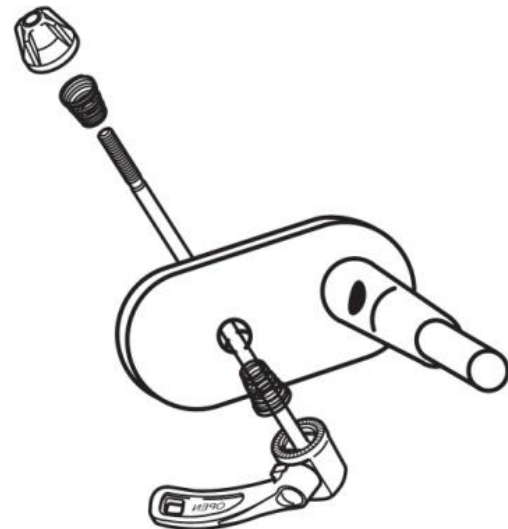
1)



2)



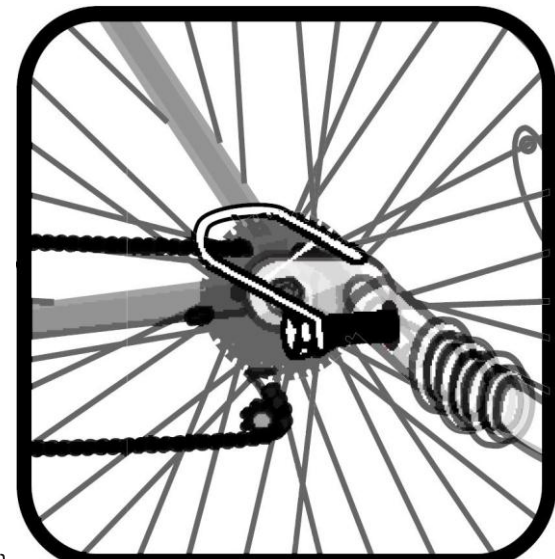
3)A



3)B



4)



5)



Always secure the hitcharm with the safety strap. If the hitcharm were to work free of the hitch unit, the Carrier will still be attached to the bicycle by means of this strap.



Irrespective of this, you should always make sure the hitch is fitted correctly. If the hitch works free, the hitcharm may get caught in the spokes of the bicycle wheel, representing a risk of the cyclist falling off and getting injured.



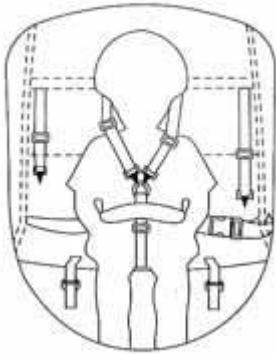
Always avoid going over obstacles with one wheel of the Carrier only, especially on bends – the Carrier might tip over, even at walking pace!

## USING THE FIVE POINT SEAT HARNESS

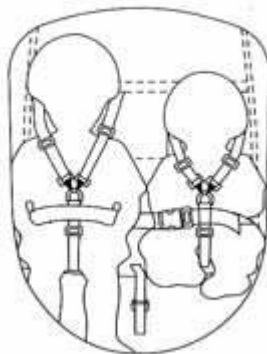
The harness system in your Foldable Trailer is designed to keep your passengers immobilized and secure during transport. The harness is designed to accommodate one or two children. Disconnect shoulder strap clips from crotch strap D-ring. Place child in seat. If carrying a single passenger, place child in the middle of the trailer seat. Put one strap over each shoulder and connect to the D-ring of the crotch strap. Adjust shoulder crotch straps to be snug and secure. Fasten lap belt and tighten securely.

*Never ride without securing passengers in the Five Point Harness. Unrestrained passengers can affect bike handling; and they may be more likely to be injured in the event of an accident.*

**1 Kid**



**2 Kid**



**▲ WARNING:**

If the child's protrudes above the upper crossbeam in the seated position, they are too tall to ride safely in the trailer.